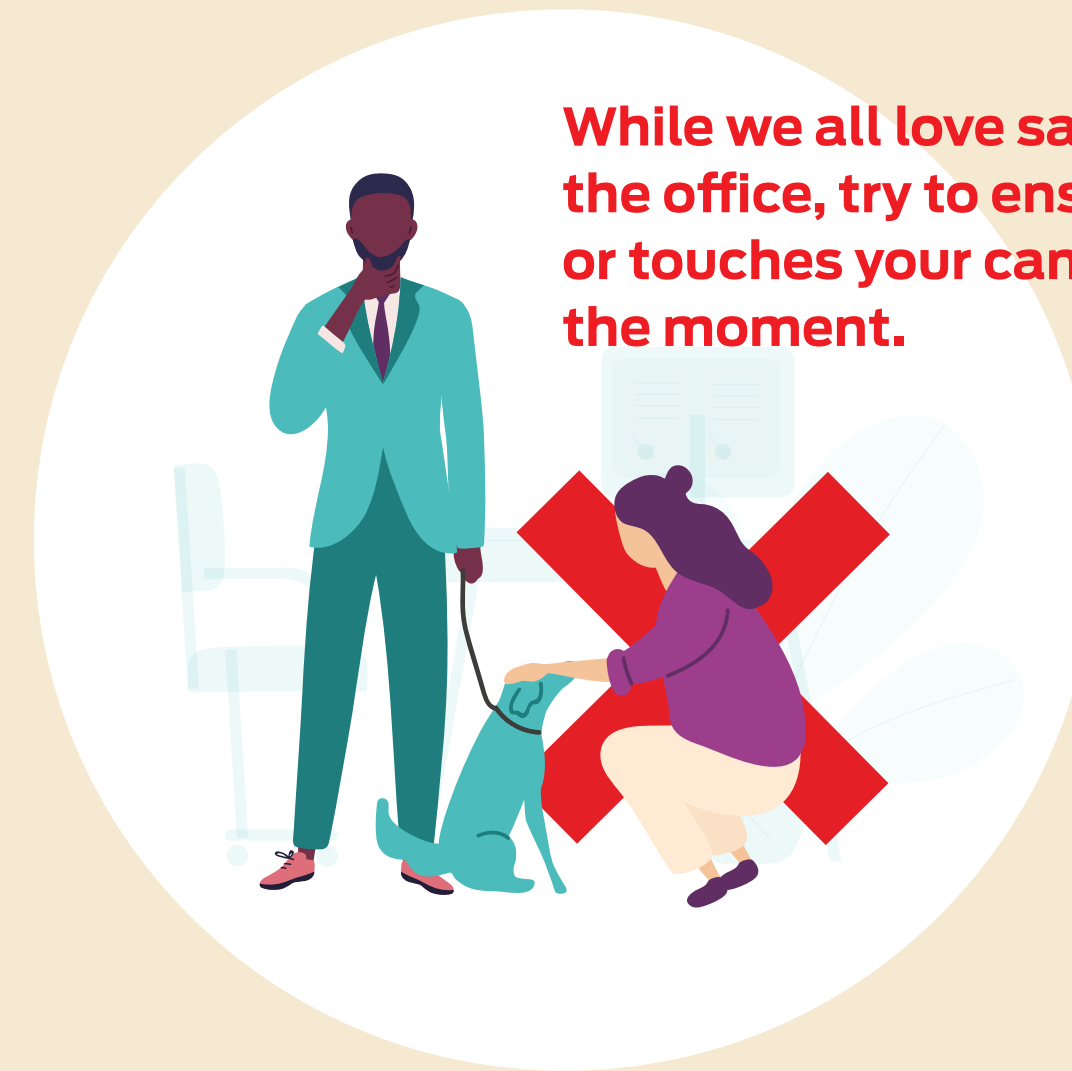


Purina's top tips on how to safely bring dogs back into the office

Restrict the number of dogs in the office by limiting to one dog per person, at any time.



While we all love saying hi to dogs in the office, try to ensure no one strokes or touches your canine companion at the moment.



Keep your dog on a short fixed lead to ensure you're able to control them easily. Extendable leads ideally shouldn't be used in offices right now.



Clean dog bowls for water should be brought into the office daily.



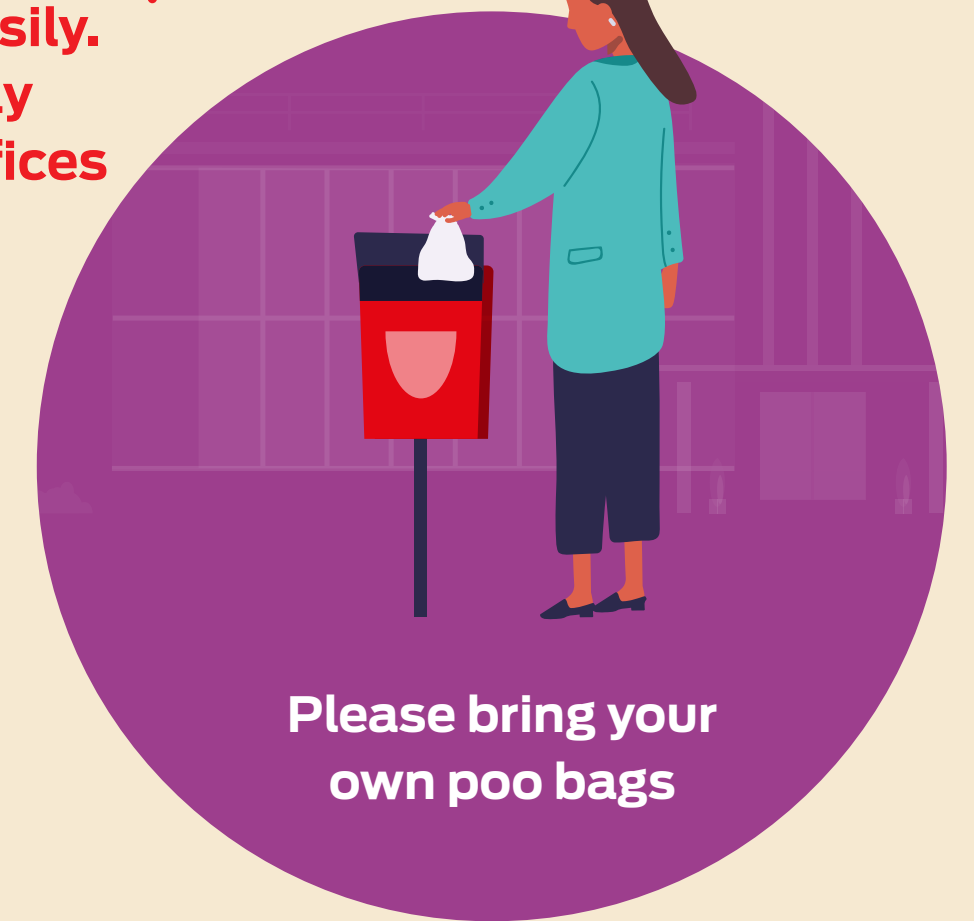
For hygiene reasons try to only give dogs small treats in the office.



Dog beds should be taken home at the weekend and washed for the following week.

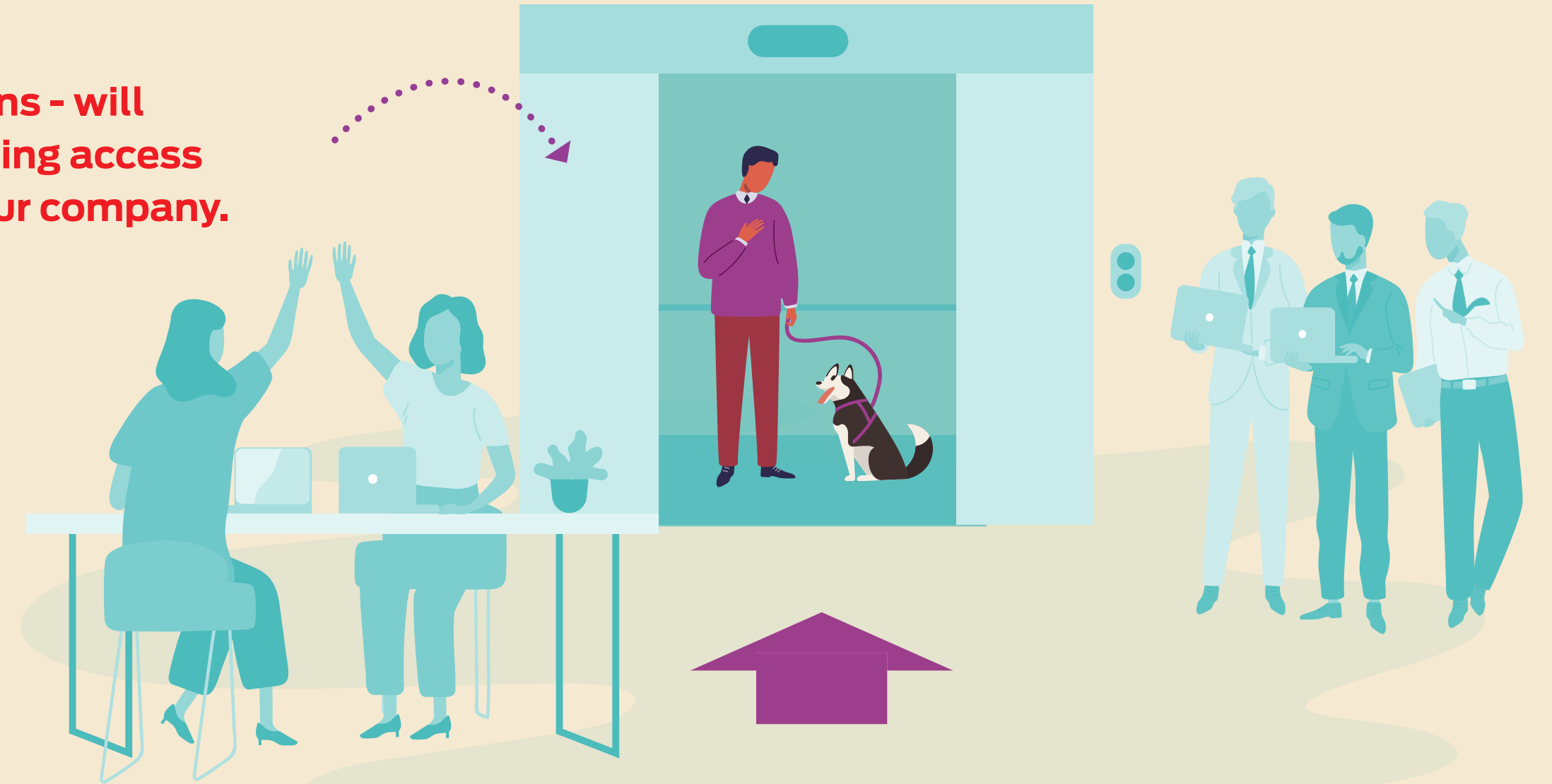


Please bring your own poo bags



Purina's top tips on how to safely bring dogs back into the office

Dogs - just like us humans - will need to follow any building access guidelines set out by your company.



Please use hand sanitizers regularly. Humans only for this one!



At the start of the day, it's a good idea to find someone in your work area to be your dog buddy – you can ask them to watch your canine pal if you need to leave your desk for any reason.



If you have a dog garden or outside office space, try to minimise the number of dogs in the area at any one time.



Purina's top tips on how to safely bring dogs back into the office Q&A

What if my dog is psychically sick or has an accident in the office?

You should clean up after your dog. Cleaning materials may be available from your facilities team & you may need to inform them of the incident. If you don't have a facilities team, you could bring in your own cleaning materials.

What do I need to bring if my dog is coming into the office?

Minimise the number of dogs in a confined outdoor space by adhering to your company guidelines.

- A short lead
- A bottle of water to top up the dog water bowl
- A clean water bowl
- Poo bags
- A dog bed (beds that were left in the office have all been thoroughly cleaned)

What if I need to go to the toilet or a grab a drink?

When stepping away from your desk try to ensure someone is able to watch your dog on your behalf. If the office is not at full capacity, you should check that someone is available within your working area that can watch your dog for you prior to you bringing them in.

What if my dog is unwell?

If your dog is unwell it's probably best not to bring them into the office.

What if someone touches my dog?

We would advise that you clean your lead with an antibacterial wipe and ensure that the person washes their hands thoroughly.

What should I do with my water bowl at the end of the day?

You should take your water bowl home with you every day. The water bowl will need refreshing and cleaning daily before being brought back into the office.

Can I feed my dog in the office?

For hygiene reasons we recommend only small infrequent treats are given inside the office.